

***Guardforce***

# PRODUCT PORTFOLIO



**SOLUTIONS BEYOND SECURITY**

# About Guardforce

Guardforce is a leading security service provider in Hong Kong and the Asia Pacific region established since 1977. We are trusted by major banks, retailers and large corporations for one-stop security solutions integrating various security services such as cash-in-transit, cash management solutions, secure courier and storage, security personnel and electronic security. The group has developed a strong reputation for its diversified and reliable security services in Hong Kong, Macau, Thailand, Australia and New Zealand.

## Our Electronic Security

Guardforce leverages proven security expertise and state-of-the-art technological devices to build security solutions designed for the specific and progressive needs of different businesses. Tapping the full potential of electronic security devices, Guardforce provides solutions that go beyond basic surveillance and security functions to derive commercial benefits, such as using facial recognition to identify VIPs or blacklisted personnel, allowing salesperson to provide personalised customer service accordingly, or combine CCTV systems with retail analytic technology to map out a full picture of customer flow in retail premises.

The multi-purpose solutions devised by Guardforce will enhance security, operational efficiency as well as deliver market insights, generating long term benefits to our customers.



# Content

■ Access Control	3 - 10
■ Alarm	11 - 16
■ CCTV System	17 - 25
■ Facial Recognition	26 - 28
■ Retail Analytic Solution	29 - 30
■ Outdoor Security	31 - 37
■ Other Products	38 - 40
■ Application	41 - 44

“

Access control systems perform authorisation identification, authentication, access approval, and check accountability of entities, by using login credentials including passwords, personal identification numbers (PINs), biometric scans, and physical or electronic keys. A risk assessment should be carried out to identify threats and vulnerabilities specific to your application. The physical environment, your budget and the false acceptance / rejection rate are also key factors to consider.

”

# Access Control



# Sateon Access Control System



**100% Browser-based Access Control**  
**No software installation needed. You can do your work anytime, anywhere**



## Features

- 100% browser based
- No need for software installation
- Perfect for systems of small or large corporations
- Industry-standard IT architecture
- Support third-party system integration
- Multiple-language support
- Future-proof with support to popular reader technologies



## Incredible user experience

- Print ID badges
- Management reports
- Alarm and incident management
- Graphic maps
- Video integration
- Visitor management

# Sateon Access Control System



## Features



**EZ Intelligent I/O Controllers**

- Type IO12 - 8 + 4 alarm inputs and relay outputs (IP and RS485 versions available)
- Type IO24 - 8 + 16 alarm inputs and relay outputs (IP version only)
- Power over ethernet supported
- Panel tamper monitoring
- Real-time processing at the controller
- On-board information LEDs
- Battery back-up
- Up to 4,000 event buffer if off-line
- No system limit for the number of controllers
- 106mm x 130mm x 38mm (H,W,D) (IO12 board only)
- 106mm x 189mm x 38mm (H,W,D) (IO24 board only)



**EZ IP Line Header**

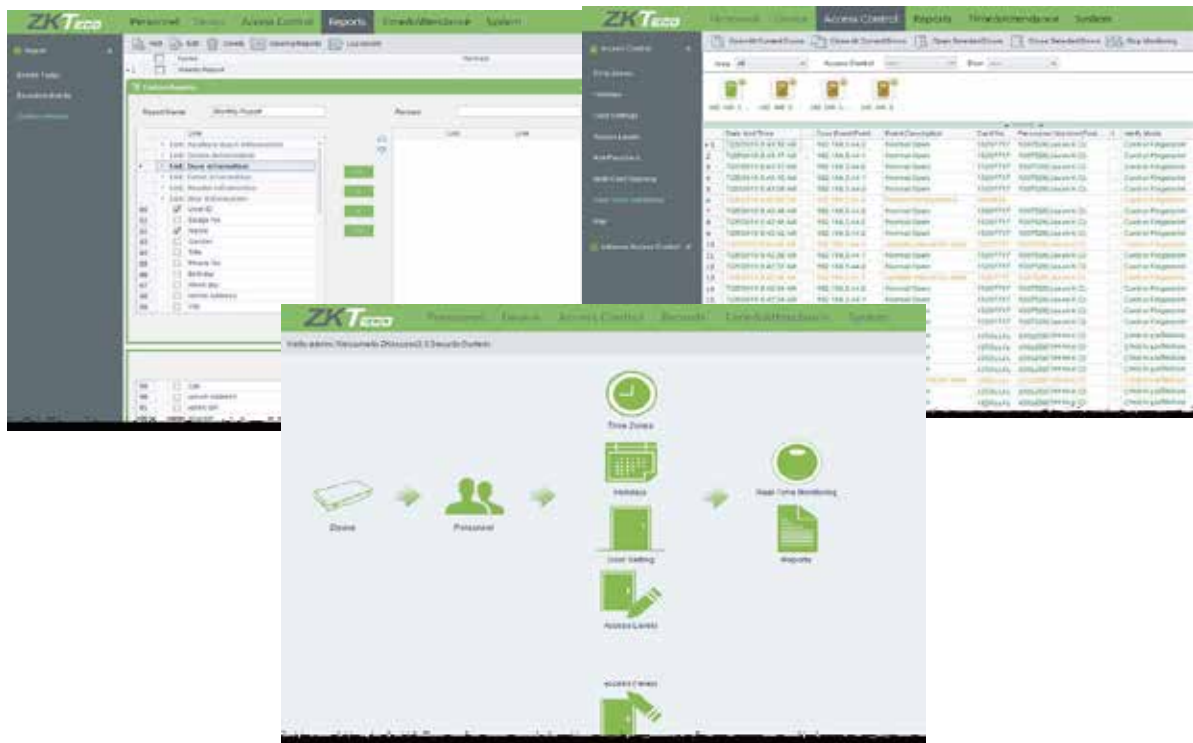
- IP to RS485 2-wire Convertor
- Enables routing of RS485 Field Network via a PC network
- 10/100 BASE-T
- DHCP supported
- Optional 128-bit Rijndael Advanced Encryption Standard
- Power over Ethernet supported
- 32 controller nodes per SATEON Field Network
- 1,200 Mtrs Field Network cable run supported
- No system limit for the number of IP Line Headers
- 105mm x 72mm x 18mm (H,W,D) (board only)



**EZ Door Controllers**

- 2 readers with PIN - 1 or 2 door configuration
- Up to 65,000 tokens at each controller
- IP and RS485 versions available
- Power over Ethernet (PoE Plus) supported
- Modern reader technologies supported
- 1 supervised alarm input
- Panel tamper protection
- Real-time processing at the controller
- On-board information LEDs and sounder outputs
- Individual battery back-up
- Data configuration retained for up to 100 hrs
- Up to 4,000 event buffer if off-line
- 1A @ 12V DC available per lock output
- No system limit for the number of controllers
- 105mm x 129mm x 37mm (H,W,D) (board only)

# ZKAccess 3.5 Access Control



Access Control

**Cost-effective, multi-function, user-friendly access control management solution  
Ideal for small and medium business applications**

## Features

- Easy to configure and use by menu-driven dashboard display
- Secure door management by setting anti-passback and interlocks between doors
- Real-time monitoring
- Maps, reports and maintenance are available
- Integrated time attendance and access control application
- Support both standalone devices and control panels (Version 3.5.2.2189 or above)
- Manage up to 100 devices (standalone SDK and PULL SDK)
- Complete software reporting
- Supports upload and download by USB flash drive

# ZKTeco Access Control Series



VF380



FR1200

**Compatible with software:**  
**ZK Time 5.0 Attendance Management (basic version),**  
**ZKTime.net (advance licensed), ZK Access Control Management 3.5**

## Features

- Time & attendance record
- Facial device with access control
- Full colour touch screen
- Infrared camera
- Professional facial ID algorithm
- TCP / IP communication
- Stores 800 facial templates / 10,000 RFID cards
- Reads Facial and / or Pin's and / or RFID card
- 160mm x 104mm x 36mm (92mm with bracket) (H,W,D)

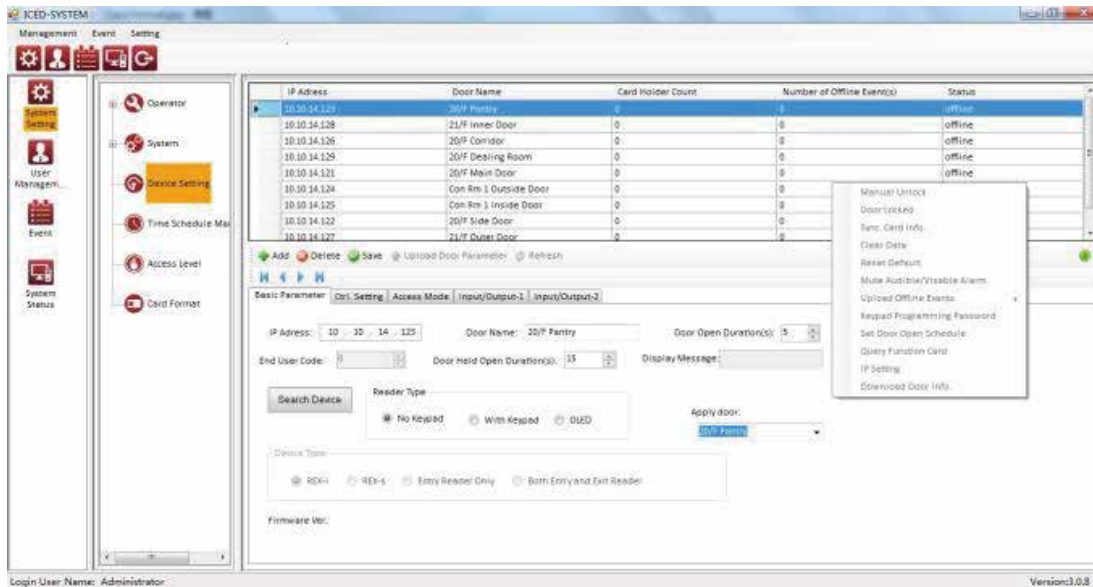
### Enhanced Features

- Audio - Visual indications for valid / invalid entries
- Built-in USB port allows for manual data transfer
- Tamper switch
- Integrated 125kHz RFID proximity reader
- Access Control Relays

- Work with biometric access controllers / standalone mode
- Able to transfer fingerprint samples to access control panel
- All weather conditions including outdoor IP65 protection
- Mifare card module as an option
- Built-in alarm buzzer
- 102mm x 50mm x 37mm (H,W,D)



# Guardforce ICED Software



**Economical access control solution support multi-sites usage  
Ideal for system upgrade and replacement**

## Features

- Support multiple languages
- Provide graphic status of all doors inside the system
- Easy import and export database file via ".xls" file format
- Support multiple operators with individual authority assigned
- Allow users to manual control the field devices via short menu
- Support different access modes; such as "Card", "Card + PIN", "Number pad only"
- Support multiple "IN/OUT" readers for time attendance
- Optional "First Access" trigger for Time Schedule Unlock function
- Support multiple card format
- Support Interlock function

# Guardforce ICED Access Control

## Guardforce Fingerprint Series

### Features



**Number pad Fingerprint**

#### Network Version

- Can work on Low Frequency reader (125KHz) and Mifare reader (13.56MHz)
- Can use configuration card to change fingerprint reader to enrollment device
- Finger templates stored in Fingerprint Reader
- Support 2K users, max. 4K templates, 2 templates for each user
- Use software to upload and download via RS485
- Fingerprint (FP) / Card + FP / Card + PIN + FP
- Universal back-plate
- All input and output signals are protected against static charges
- Reverse power protection
- All inputs are 12Vdc protected
- 330g / 186mm x 85mm x 22mm (L,W,H) 31.5mm (H) (fingerprint scanner)



**Standard Fingerprint**

#### Non-Network Version

- Available for High Frequency technology Mifare (13.56MHz) only
- Can perform offline enrollment on any Finger Scan Reader by using Reader Function Card
- Finger template stored in Mifare Card
- Fingerprint capacity based on the card capacity
- No synchronisation required
- Card + FP / Card
- Universal back-plate
- All input and output signals are protected against static charges
- Reverse power protection
- All inputs are 12Vdc protected
- 330g / 186mm x 85mm x 22mm (L,W,H) 31.5mm (H) (fingerprint scanner)

# Guardforce ICED Access Control

## Guardforce Magic Series



**Standard Magic**



**Mini Magic**

### Features

- Available in different technology 125KHz / 13.56MHz  
Mifare / Mifare Plus / DesFire / Legic / CPU
- Economical Mini Magic can be mullion mount
- OLED Display allow user to see the message clearly under direct sunlight
- Support on-site Reader Configuration Card
- Temper protection
- Customisation of front-plate and back-lit design
- Design with end user logo is possible
- Door Bell function for number pad reader
- All-weather-proof design with IP65 certificate
- All input and output signals are protected against static charges
- Reverse power protection
- All inputs are 12Vdc protected
- Stainless steel security screw optional
- Card + PIN operation for Standard Magic
- Standard Magic:  
210g / 115.5mm x 84.5mm x 20.5mm (L,W,H)
- Mini Magic:  
160g / 84.05mm x 54.05mm x 16.5mm (L,W,H)

“ Alarm systems serve as a first line of defence against burglary. The features and functions of an alarm system can be tailored to the needs of a business. Fundamentally, the system should be used to monitor areas that may be exposed to unlawful entry. In cases of incidents, the system should send instant alert to the monitoring agents or premises owner. Other factors to consider when deciding on an alarm system are system connection means (wireless or wired), designating a party to respond to the alarm, response timing, budget, contingency plan in case of system failure, risk of false alarm, and using central monitoring centre or a key holder.

”

# Alarm



# Pacom GMS 4 Burglar Alarm System



**A fully-integrated security system, enabling you to effectively handle access control, alarm and video from one central location**

## Alarm Management

- **User-friendly system overview**  
Status summary presented in user-friendly colour-coded graphic
- **Seamless escalation of alarms**  
Alarms that have not been actioned within a set time can be escalated automatically
- **Intuitive navigation**  
Site maps linked to Google Maps simplifies navigation when identifying location of the event
- **Reduction of false alarms**  
Integration with video allows operator to easily retrieve the event's live or recording video
- **Customised user interface**  
The operator instruction screen can be customised according to personal preferences
- **Third-party integration**  
Monitoring can either be managed by user or outsource to a central alarm monitoring centre, using contact ID protocol

## Access Control

- **Real-time mustering**  
Keep track of who is in building during emergency situation
- **Smart temporary cards**  
Ensures temporary cards are returned after used
- **Dynamic security levels**  
Areas can be set to change security level
- **Web-based card access management**  
Issuing card, changing access level and generating reports can be done using web browser

## CCTV

- Optional High Level Interface between the DVR / NVR and Pacom Field Controller
- Stream live video to the GMS workstation by clicking an interactive camera icon
- Automatic live and / or recorded video displayed when actioning events enables simple verification and reduction of false alarm call outs
- Easily link cameras to events such as alarm activations and card access transactions

# GE Burglar Alarm System



GE NetworkX Control Panel NX-8

**Multi-function GE NetworkX Control Panel support wireless devices**

## Features

- All Inputs can be configured as Fire Alarm or Burglar Alarm
- Maximum 24 system keyboard can be connected
- Expandable to 48 Input Circuits
- Upload / Download system configuration through remote software
- Insertion-type expansion board to utilise the space in controller box
- Capable to connect 2-wire / 4-wire smoke detector
- The same circuit can be configured to different areas
- 99 nos. of 4-pin code or 66 nos. of 6-pin code
- Alarm Sounder monitoring circuit
- Scheduled system On / Off & extendable schedule
- Telephone line monitoring function
- 185 on-line event includes date, time and event
- Full-scale tamper protection
- 286mm x 286mm x 89mm (W,H,D)

Alarm

## Available keyboard series



LED Keyboard



LCD Keyboard with removable door



Fixed-display Keyboard with removable door



LED Keyboard with removable door

# GE Seismic Detector



GE VV600 Series

**Designed to detect attempts to break into vaults, safes, night deposit boxes, automatic teller machines (ATM's) and other reinforced physical areas such as data storage and filing cabinets**

## Features

- Detects all known methods of attacks
- Adjustable sensitivity
- Advanced signal processing differentiates between ambient noise and real attacks
- Full-scale tamper protection
- Extremely low current draw
- Complete line of accessories
- Two options of testing
- Easy to install

# iHorn Burglar Alarm System



**The all-in-one solution synchronises Alarm and DVR recording functions to address security needs. Equipped with real-time remote monitoring and bookmark feature, this solution is an ideal choice for office or home use**

## LHT300A System

### Features

- All-in-one solution with synchronised Alarm and DVR recording function
- Real-time remote monitoring through the default central alarm monitoring centre or mobile device
- Bookmark feature allows immediate retrieval of the video recording between 10 seconds before and after the incident that triggers the alarm
- High security with separate recording and alarm functions
- Alarm message includes alarm notification, pre-record video and alarm panel status
- One-touch online upgrades reduce costs
- Easy installation by P2P NAT traversal
- 4 channel video, support two streaming
- Remote control alarm system, support mobile Apps
- Temper alarm notification
- Standby battery supported
- Real-time voltage monitoring

# iHorn Burglar Alarm System



LHD8003

Alarm

**Cost-effective, stable, all-in-one wireless security solution using a series of wireless accessories - suitable for residential and commercial facilities**

## Wireless Pet Immunity PIR Detector (LH-939BF)

- Transmitting frequency: 433MHz / 868MHz
- Pet Immunity 35KG
- Periodically send online report to control panel (low battery, supervision, anti-tamper, alarm signal)
- White light immunity 10000 Lux
- Auto-temperature compensation, avoiding false alarm
- Low power consumption, long battery life
- 3\*AA Alkaline battery



## Wireless Outdoor Siren (HC-105F)

- Transmitting frequency: 433MHz / 868MHz
- Built-in million encoding
- Highly water-proof pc housing, UV prevention
- Sounder 105db at 30cm
- Sound and flash alarm
- Back-up battery
- Rear tamper



## Wireless Smoke Detector (SD-007F)

- Transmitting frequency: 433MHz / 868MHz
- Built-in million encoding
- Periodically send online report to control panel (low battery, supervision, anti-tamper, alarm signal)
- Manual test function
- Automatic reset after alarm
- Easy installation by special base
- Wireless range 100m (no obstacle)
- 9V Alkaline battery



## Wireless Magnetic Switch (HO-03W(IV))

- Transmitting frequency: 433MHz / 868MHz
- Built-in million encoding
- Periodically send online report to control panel (low battery, supervision, anti-tamper, alarm signal)
- 12V Alkaline battery
- Rear tamper





# Burglar Alarm Accessories



**Guardforce Siren (SS-107)**

## Features

- Self-activated with back-up battery
- Sound and flash alarm
- Water-proof ABS / AS housing, UV prevention
- Sounder 120db at 100cm
- LED strobe source
- Triple tamper protection
- Working Voltage: 10V DC - 16V DC
- Dimension: 215mm X 285mm X 100 mm (W,L,H)

### Fire Alarm



**HF911(II)**

### Emergency Button



**HO-01**

### Door Release Button



**HO-02**

### Magnetic Contacts



**HO-03B**



**HO-03M**

### Strobe Light and Electronic Siren



**HC(ES)-626-320**



**HC-05**



**Embedded Series  
HO-03C**



**Rolling Gate Series  
HO-03I**

### Siren



**Piezo HC-103**



**Iron Gate Series  
HO-03F**



**Concealed Type  
HO-03L**

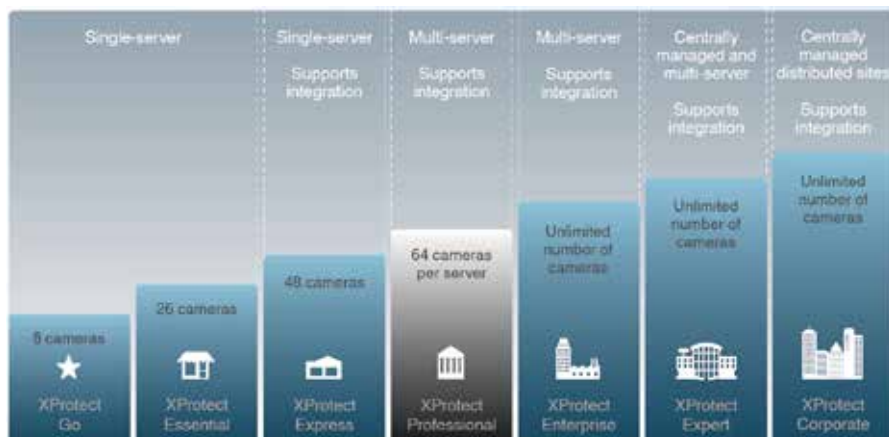
“ Choosing the right surveillance system for your business is crucial, not only for security reasons but also for operational benefits as surveillance technology evolves to deliver multi-level functions. When evaluating a system for your business, identify and understand your requirements and needs first. Think whether you want it to be discrete or act as a visual deterrent. Is it used outdoors or indoors, wireless or wired? What is the size of the area to be covered? What solution do you want, in what lighting condition, and is scalability important, do you need VMS analytic function? Remember that regular maintenance is also important to ensure your system is operating at optimal level at all times.

”

# CCTV System



# Milestone System Xprotect Professional



A scalable, cost-efficient, comprehensive interactive monitoring system for mid-sized installations. Able to support unlimited number of recording servers and cameras

## Features



Playback view



Mobile Access

**XProtect Smart Client** is the primary interface for security operators; it provides unique video search tools such as Smart Search and the Sequence Explorer to quickly locate recordings of incidents.

**Smart Search** lets users search for motion in one or more selected areas of images from a particular camera.

**The Sequence Explorer** displays a visual overview of captured video and time intervals from one or more cameras as drag-and-throw image thumbnails to help collect evidence quickly.

**XProtect Web Client** provides flexible access for users to view, playback and export video from any internet enabled PC.

**Milestone Mobile** is an application which enables users to view, playback and export video from most mobile devices or tablets.

**Video Push** enables Milestone Mobile users to turn their mobile devices into portable evidence collectors with video push. Through this function, security staff can stream live events and extend the visibility of central monitoring stations allowing them to act in a more proactive way.



Map

XProtect Professional features interactive and multi-layered maps displaying the location of every camera in a surveillance installation. Users can see a preview of video from any camera directly in the map.

The Map function improves efficiency in larger surveillance installations by providing instant verification of issues and security breaches, resulting in faster response times.



Alarm Manager

The Alarm Manager consolidates all the alarms from a security installation into one video-enabled single point alarm function. It also provides a unified and clear overview of any system-related alarm allowing security operators to prioritise the most critical ones.

All cameras within the area of the triggered alarm will be presented clearly on a map so users can quickly examine the incident and minimise the number of false alarms. The Alarm Manager displays priorities, instructions that need to be followed, alarm statuses and escalation possibilities to optimise the handling of each individual alarm.

# Honeywell Network Video Recorder

High-quality image recording with high-level of data protection  
Ideal for advanced and accurate surveillance

## Features

### 32 CHANNEL NETWORK VIDEO RECORDER

- Real-time recording: up to 32 channel, Live view: 16 channel
- H.264 high quality decoding
- 1 / 4 / 6 / 8 / 9 / 16 / 32 channel display mode
- 4 channel simultaneous playback , 30s instant playback
- Hardware RAID 0, 1, 5, 6, 10 to protect video data
- Up to 32TB storage with SATA interface and e-SATA up to 64TB storage
- Automatic IP search and “One-Click” IP camera import
- Hot swap technology for quick and easy HDD replacement
- E-signature (watermark) verification by ONVIF Player
- Defog function reduces blurring and improves image clarity
- Electronic Image Stabilizer (EIS)
- Support ONVIF Profile S, HTTPS



HUS-NVR-6032

CCTV System

### 64 / 128 CHANNEL NETWORK VIDEO RECORDER

- Maximum 256Mbps incoming bandwidth and 256Mbps outgoing bandwidth
- Up to 64 channel 1080P@ 4Mbps, 128 channel 720P@ 2Mbps real-time recording



HonView Touch  
mobile app



HUS-NVR-7064H-D



HUS-NVR-7128H-D

- Maximum 512Mbps incoming bandwidth and 512Mbps outgoing bandwidth
- Up to 128 channel 1080P@ 4Mbps, 256 channel 720P@ 2Mbps real-time recording

## Features

- H.265 video compression format - saves bandwidth and storage
- 24 bay HDDs, up to 144TB storage with SATA interface
- Hardware RAID 0, 1, 5, 6, 10, to protect video data
- N+1 redundancy to ensure continuous operation
- Remote viewing via HonView Touch mobile apps
- ONVIF Profile S Conformance
- Network failure recovery (NFR) function between IP cameras and NVR
- Automatic IP search and “One-Click” IP camera import
- E-signature (watermark) verification by ONVIF Player
- Redundant power supply
- Defog function reduces blurring and improves image clarity
- Electronic Image Stabilizer (EIS)
- Hot swap technology for quick and easy HDD replacement

### Expansion array



HUS-NVR-EC24(-D)

- Support SAS to expand storage space, up to 144TB

# DIGIEVER NVR Total Solution



**All-in-one standalone linux-embedded IP Surveillance Solutions**  
**Leading-edge solution to satisfy strict requirements and optimise user's experience**



## DIGIEVER NVR

**All-in-one standalone Linux-embedded 4K Hardware Decode Network Video Recorder**

- Real-time liveview local display
- Real-time remote browser monitoring
- Intuitive multi-channel playback
- Excellent video recording
- Powerful event and action management
- Diverse back-up methods
- Superior hardware design
- Advance and reliable security system



## DIGIEVER Extension Solutions DIGIMobile V2

**Monitor everywhere via IOS and Android Mobile system**

- Liveview
- Playback
- Direct-control NVR liveview on local display
- Quick event sorting method
- Instant event notification
- Quick monitoring from favorites



## DIGIEVER Extension Solutions DIGIARRAY DA-4000E

**A storage extension box for DIGIEVER NVR**

- Robust scalability up to 24 TB
- Multi-volume storage management
- Easy expansion via eSATA interface
- Easy deployment with Plug-and-Play design
- Rock-solid hardware RAID



## DIGIEVER Extension Solutions Video Wall Decoder VD Series

**The World's first Linux embedded wide-range temperature 4K hardware decode video decoder**

- Smart and reliable system
- Superb liveview video quality
- Compatibility



## DIGIEVER Extension Solutions Mobile NVR

**The World's first Linux embedded wide-range temperature 4K hardware decode Mobile NVR**

- Excellent display performance
- Superb hardware design
- High integration ability



## DIGIEVER CMS / Video wall CMS-Client / Video Wall Software

**Large-scale Central Management Software**

- Intuitive liveview monitoring
- Multi-layer dynamic E-map
- Multi-channel playback
- Flexible system configuration
- Build Video Wall with CMS Matrix

# AXIS Camera Station



## Features

- Optimised for Axis network video products
- Quick system setup
- Intuitive operation
- Effective investigation
- High-definition identification
- Multi-languages supported
- Up to 60 images per second per camera
- Use local hard drive or high performance NAS for storage

CCTV System

**Optimised for easy and efficient surveillance**  
**A scalable, powerful monitoring and recording software optimised for Axis network video products**

# AXIS Camera Series



**AXIS Q6000-E PTZ Dome Network Camera**



**AXIS M3007-P Network Camera**

## Features

- Full 360° overview
- 4 x HDTV 720p cameras
- One-Click PTZ control
- Compatible with any AXIS Q60-E model
- Axis Zipstream technology
- Ideal for outdoor and wide area surveillance
- Ultra-discreet design
- HDTV 1080p / 5 MP
- 180° / 360° panoramic view
- Digital PTZ and multi-view streaming with dewarped views
- Edge storage with support for microSDHC card

# Guardforce Series DVR



**1080P / 720P AHD DVR**

**AHD / DVR / NVR 3 IN 1 System**  
**Cost efficient and easy management**

**HYR204P3D9 / HYR208P3D9 / HYR216P31D9**  
**Recording resolution: 1080P**

**HYR104P1D9 / HYR108P1D9 / HYR116P1D9**  
**Recording resolution: 720P**

## Features

- Support connect to IP camera / Analog camera / AHD camera
- AHD camera and IP camera recording at the same time
- Hybrid video recorder, automatic identify AHD or Analog camera
- Support VGA & HDMI 1080P full HD output
- Support P2P, Mobile phone monitor
- H.264 video compression standard and G.711 audio compression standard
- Analog video transmission technology via coaxial cable
- Strong anti-jamming capability, ensure high-definition video transmission display
- Support 20 more languages
- Perfect protection circuit, unique triple watchdog function
- ONVIF common protocol compatible to major brand CCTV Camera

# Guardforce Series DVR

## AHD / DVR / NVR 3 IN 1 System



### Features

- Support AHD-M series front-end un-real time coding and support VGA, HDMI full-HD 1080P output
- Support multi-cloud technology, realised P2P, alarm information send to mobile
- Support mobile surveillance (iPhone, Android Windows Mobile, BlackBerry, Symbian)
- Support 20 more languages
- Support multi-network browser access (I.E., Chrome, Firefox, Safari)
- Thorough protective circuit, particular trebling dongle function, has WEB, SMS, platform, SDK

### 16 channel DVR



MG-9016DJ Series



### Features

- Remote control through cloud service
- Standard configuration ONVIF, it can support front end IPC connect
- ONVIF protocol, also support ONVIF clients connect
- Support mobile surveillance (iPhone, Android Windows Mobile, BlackBerry, Symbian)
- Support multi-network browser access (I.E., Chrome, Firefox, Safari)
- Support TV, VGA and HDMI output at the same time
- Perfect protection circuit, unique triple watch-dog function
- Support 20 more languages
- Flexible display, free replacement boot interface
- Compatibility: the ONVIF protocol compatible with network cameras

### 8 / 24 channel NVR



MG-NVR8002-2W-CJ /  
MG-NVR2408-2W-CJ Series



# Guardforce Series CCTV Camera



3A200M

## Analog HD Camera



30A200M

Cost effective HD cameras with simple installation

## Features

- Plastic AHD dome camera
  - Analog interface
  - High resolution with 1920 X 1080P
  - 24 PCS IR LED, 2.8 -12mm lens, IR distance 30 meters
  - Clearer-top photographic device, megapixel resolution
  - Good compatibility - AHD can access to any brand's back-end equipment
  - No need network knowledge, P2P one key to realise remote monitoring
  - Achieve HD and analog display at the same time
  - Low illumination, ICR, DWDR, 3D noise reduction
  - 131mm x 93mm(H)
- Vandal proof AHD Dome Camera
  - Analog interface
  - High resolution with 1920 X 1080P
  - 24 PCS IR LED, 2.8 -12mm lens, IR distance 30 meters
  - Clearer-top photographic device, megapixel resolution
  - Good compatibility - AHD can access to any brand's back-end equipment
  - No need network knowledge, P2P one key to realise remote monitoring
  - Achieve HD and analog display at the same time
  - Low illumination, ICR, DWDR, 3D noise reduction
  - 131mm x 93mm(H)

# Guardforce Series CCTV Camera



**2.0MP HD Network IR  
Bullet IP Camera**

**MG -IP200P-R-5-A2M (Manual Focus)**



**AHD Megapixel  
HD Analog Camera**

**1.0 Mega pixel / 1.3 Mega pixel / 2.0 Megapixel**

CCTV System

## Features

- Manual focus with adjustable focus knob
- Manual zoom lens 2.8mm -12mm
- Use the advanced video compression technology, high compression ratio
- Progressive-scan CMOS, capture images without saw tooth
- Support automatic B / W, day and night monitoring
- Using LED infrared homogenisation technology, match special IR lens
- Low current power supply design, IP66 waterproof
- User management, high system security
- Built-in WEB browser, support IE access
- IR distance - 45-50 meter
- Clearer visual - top photographic device, megapixel resolution
- Good compatibility: AHD can access to any brand's back-end equipment
- No need network knowledge, P2P one key to realise remote monitoring
- Achieve HD & analog display at the same time
- Good night vision: low illumination light sensitive chip
- Long distance transmission: up to 500m, lossless and delay-free

“

Face recognition is one of the least invasive biometrics, since data is captured effortlessly and generally involving no user interaction. Our technology works even with partial occlusions of the face, glasses, scarfs, caps, changes of facial expression, shadows, extreme or poor lighting conditions, or moderately rotated face.

”

# Facial Recognition



# Herta Facial Recognition



**A Multi-function Biometric Solution to identify target subject and restrict access easily, effortlessly, and fast**



## BioSurveillance

### Real-time multiple face recognition

BioSurveillance, detects multiple faces in real-time, facilitates runtime management of alarms and users and incorporates on-the-fly video enrollment.



## BioSurveillance NEXT

### Recognition up to 150 fps with high resolution IP cameras

A high performance video-surveillance solution for facial recognition, specially designed for the simultaneous identification of subjects in crowded and changeable environments. It works 40 times faster than traditional systems.

## Features

- Analyses multiple cameras simultaneously
- Fully automatic and non-invasive technology
- Works properly on changes of facial expression, illumination, beard, eyeglasses, scarfs and caps
- Subjects can be enrolled from one or more photos or video
- Integration API available
- Perfect solution for crowded environments such as airports, metro stations, shopping malls, stadiums, etc

## ID MANAGEMENT (For BioSurveillance NEXT)

- Automatic subject enrollment function
- Allows for multiple watch lists (blacklists / whitelists)
- Runtime alarm management, highly tuneable
- Compact, flexible system with central multilingual management
- Alarms can be exported to PDF format and visualised on remote mobile devices



## BioFinder

A solution that makes it possible to search for a specific subject, using facial recognition, in one or various recorded videos.

## Features

- Simultaneous recognition in multiple video recordings
- GPU technology, at speeds faster than real time
- Intensive, frame by frame analysis, without omissions
- Supports changes in facial expression and illumination, and the presence of glasses, beards, handkerchiefs or hats
- Capacity to enrol subjects through one or various pictures
- Alarms exportable to PDF format

## APPLICATIONS

- Forensic analysis of video recordings
- Automatic classification of information from recordings
- Searches for suspects in large video databases

# Herta Facial Recognition



## BioAccess

Face biometrics is used to identify users from access control lists and verify their identity.

## Features

- Automatic subject enrollment function
- Allows for whitelists and blacklists
- Alarms can be exported to PDF format and visualised on remote mobile devices (Android, Apple)
- Compact & flexible system with central multilingual management
- Completely automatic technology
- Works properly on changes of facial expression, illumination, beard, glasses, scarves and caps
- Subjects can be enrolled from one or more photos
- Maximum efficiency when trained with several photos or videos
- Users cannot be impersonated using photographs
- Integration API available
- Perfect solution to control the access of users to physical locations such as buildings, offices, data centres or restricted security areas in general



## BioMarketing

With facial analysis technology it is possible to learn more about your customers and classify individuals based on their physical appearance and then use that information in interactive, targeted marketing.

## Features

- Extraction of features and multiple face detection in real-time
- Image, video, or live capture
- Automatic and non-invasive technology
- Multiple user characteristics (age range, gender, ethnicity, use of glasses, facial expression)
- Integration API available

## APPLICATIONS

- Segmentation of objective target
- Smart selection of advertisements
- Adaptation of content to the audience
- Permanent acquisition of customer statistics

“ With the simple click of a button, our Retail Analytic Solution lets you understand how customers experience your stores. Powerful reports, dashboards, and data visualisation offer new insights into the shopping journey and unprecedented visual access to your business. ”

# Retail Analytic Solution



# Retail Analytic Solution



Transform real-world patterns and trends into powerful and easy-to-understand reports and visual summaries

## Visitor Analysis



### People Counting

- Total number of people within a timeframe
- Works for multiple access



### Path Map

- Understand where customers go
- Validate assumptions and recognise patterns



### Heat Map

- Identify popular zones in a store

## Store Analysis



### A / B Testing

- Compare result of different display



### Zone Monitoring

- No. of people enter the zone
- No. of people staying on average
- Average no. of people on the zone per hour

## Product Analysis



### Product Popularity

- Understand which products are picked up the most
- Compare product interactions across multiple display

## Operation Management



### Multi-store view

- Search by product category
- Compare traffic of different store
- Conduct store audit



### Multiple Access

- Store monitoring
- Cross-store traffic comparison
- Manpower relocation
- Opening hours monitoring
- Stock delivery status



### Zone Monitoring

- Monitor key service areas
- Optimise staff placement
- Predict customer trend

## Real time remote access



### Insights and reports

- Access insights anytime, anywhere
- Reports are available
- User-friendly visual insight

“ Highly secure, sensitive and reliable outdoor security is critical for the prevention of crime for large complexes and it is the first line of protection. Our state-of-the-art outdoor security solutions are able to provide all-round solutions to defend, deter, deny and detect potential crimes. ”

# Outdoor Security





# AFSCO Electric Fence



**Low-cost solution to fend off high-cost crime**

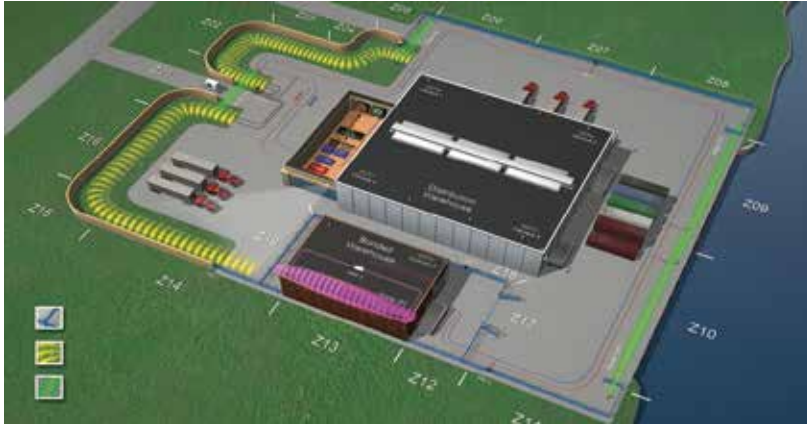
## Features

- Repelled by releasing a short, sharp, regulated, safe but painful electric shock
- Alarms generated on detection of attempts to load, cut and short-circuit or tamper
- Compliant with national and international safety and security standard including BSEN 60335 upon completion of installation
- Quality assured, systems are only provided through accredited dealer network
- Controller with open system architecture for easy interface to other security systems on full remote monitoring and controlling

## Application



# Southwest Microwave



**Integrated perimeter security solutions to prevent unauthorised access, vandalism, theft or harm to critical infrastructure and property**

Outdoor Security

## Fence Detection System

Revolutionary fence-mounted smart sensors that pinpoint cut or climb intrusion attempts to within 3m (10 ft) and eliminate environmental nuisance alarm problems.



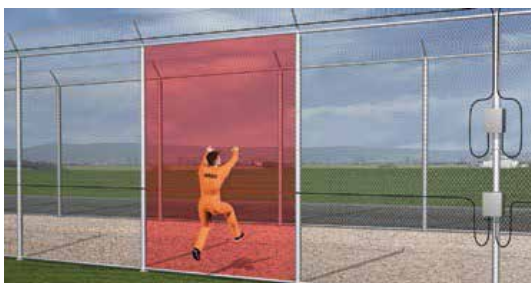
**INTREPID MicroPoint**

New-generation MicroPoint™ fence detection, featuring open-architecture communications protocol for networking with other INTREPID™ Series II technologies.



**INTREPID MicroPoint Cable**

Unique cut / climb detection technology featuring precise disturbance location, resistance to nuisance alarms, uniform detection sensitivity and software-controlled zoning.



**MICRONET**

A solution for correctional facilities featuring simplified administration tools and heavy-duty hardware for maximum tamper-resistance.



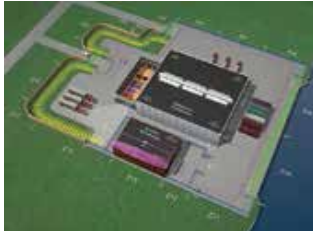
**MicroPoint Tape**

Ruggedised perimeter fence solution for barbed tape applications.

# Southwest Microwave

## Alarm Monitoring and Control System

Advanced security management systems that monitor, display and control a facility's complete perimeter security program.



**INTREPID SINGLE-PLATFORM SYSTEM CONTROLLERS**

Scalable, open-architecture security management and networking solutions for new-generation INTREPID™ systems, offering the utmost in flexibility for diverse site parameters.



**PERIMETER SECURITY MANAGER**

The ultimate in device integration and ease of use for centralised perimeter security control across single or multiple locations.



**INTREPID MAP MONITOR / ADVANCED MAP MONITOR**

Graphical user interface with integrated alarm, event and device management plus complete reporting capabilities.



**MICRONET PREMIUM PERIMETER MONITOR**

Simplified yet full-featured GUI-based perimeter security management system for correctional applications.

## Microwave Sensors

Short or long range volumetric microwave links and transceivers for the detection of intruders at fencelines, in open areas, at gates and entryways and for rooftop and wall applications.



**INTREPID Microwave 330 DIGITAL MICROWAVE LINK**

K-Band detection to 457m (1500 ft) / 244m (800 ft) (CE). Open-architecture networking with other INTREPID™ Series II technologies.



**MODEL 300B MULTIPLE RANGE MICROWAVE LINK**

X-Band detection to 183m (600 ft). Short range pattern for gate protection. Extended range patterns for full perimeter protection.

# Southwest Microwave

## Microwave Sensors



**MODEL 310B-33456  
EXPLOSIONPROOF MICROWAVE LINK**

K-Band detection to 100m (328 ft). Reliable intrusion detection in the presence of ammable or combustible materials.



**MODEL 320SL DUAL  
SYNCHRONIZED MICROWAVE LINK**

X and K-Band detection to 183m (600 ft). Maximum-security stacked sensor configuration for the highest risk applications.



**MODEL 310B LONG RANGE  
MICROWAVE LINK**

K-Band detection to 457m (1500 ft). Narrow beam width for operation at long ranges and within narrow corridors.



**MODEL 316 LONG RANGE  
MICROWAVE LINK**

K-Band detection to 244m (800 ft). Narrow beam width for operation at long ranges and within narrow corridors.



**MODEL 380  
MICROWAVE TRANSCEIVER**

K-Band detection to 61m (200 ft). Continuously variable range cutoff prevents alarms from targets beyond a specified range.



**MODEL 385  
MICROWAVE TRANSCEIVER**

K-Band detection to 122m (400 ft). Continuously variable range cutoff prevents alarms from targets beyond a specified range.

## Relocatable Microwave Sensors

Rapid deployment short or long range microwave sensors for the protection of VIPs, mobile assets or other temporary high security applications.



**316 RDS  
RAPID DEPLOYMENT SENSOR (LINK)**

K-Band detection to 244m (800 ft) – CE Certified. Narrow beam width for operation at long ranges and within narrow corridors.



**385 RDS  
RAPID DEPLOYMENT SENSOR (TRANSCIVER)**

K-Band detection to 122m (400 ft). Continuously variable range cutoff prevents alarms from moving targets beyond a specified range.

## Infrared and Dual Technology Sensors

Advanced, stand-alone high-performance sensors for short and medium range outdoor intrusion detection applications.



**MODEL 415 PASSIVE  
INFRARED INTRUSION SENSOR**

Digital signal processing, adaptive threshold decoding and signal shape analysis ensure reliability in varying conditions. 107m (350 ft) range.



**MODEL 460B ACTIVE  
INFRARED INTRUSION SENSOR**

6-beam outdoor active infrared sensor with a protection zone of up to 100m (328 ft) for gates, narrow corridors or applications with aesthetic concerns.



**MODEL 455B ACTIVE  
INFRARED INTRUSION SENSOR**

Quad-beam sensor with 50m (165 ft) range designed for gate protection or walltop applications.



**MS15 / MS16 DUAL TECHNOLOGY  
MOTION SENSOR**

Designed to detect upright / walking and running targets. MS16 offers enhanced detection capability for prone crawling targets.

## Buried Cable Detection System

Terrain following, volumetric smart sensors that pinpoint intrusion attempts to within 3m (10 ft) for applications where covert protection and site aesthetics are essential.



**INTREPID MicroTrack II**

New-generation MicroTrack buried cable detection, featuring open-architecture communications protocol for networking with other INTREPID™ Series II technologies.



**INTREPID MicroTrack**

Unique buried cable detection technology featuring precise disturbance location, resistance to nuisance alarms, uniform detection sensitivity and software-controlled zoning.

Outdoor Security

## Application



**Government / Military**



**Utilities**



**Industrial**



**Transportation**



**Correction**



**VIP Protection**

“

Other than standard security system, additional products are also available to extend protection valuable assets at home or in offices or retail outlets, such as secure vault set up and building, PBA system, digital locks, bullet-proof glasses and other security devices. Please consult our security advisor for more details.

”

## Other Products



# Safe

Robust safes from reputable Chubb brand keep your valuable assets safe

## Features

- Tested and approved by ECB-S to security level S2 in accordance with EN 14450
- With an effective body and barrier thickness of 65mm
- Door is constructed from a 10mm steel plate with additional protection over the locking cover. A Fire Resistance material is incorporated at the back panel of the door
- Boltwork with New “Anti Heeling” feature, which provides stronger bolts protection and more resistant of buckling under prying attack
- Offers 30 minutes fire resistance protection for documents. Tested in accordance with Japanese fire test J.I.S S1037
- Bigger and bolder hinge to provide better protection
- High Security Mauer double bitted key lock with non-key retaining function
- Comes standard with an appealing King Cobra fascia panel
- Fitted with S&G Three Wheel KCL combination lock, highly recognised and reputable in the world



**Chubb Safe King Cobra**

Other Products

## Features

- The body has a total barrier thickness of 68mm
- Chubb Torch and Drill Resisting barrier. The T.D.R. is 51mm thick and provide high level of protection against oxy-acetylene attack
- The door has an overall thickness of 190mm and a total barrier thickness of 73mm
- The lock and boltwork are enclosed by a hinged lock case cover secured by two Chubb locks
- The door is secured by 38mm diameter moving bolts which extend from all four sides of the door
- Optional fittings - Heavy duty shelves / lockable cupboards / lockable drawers / deposit traps (only size 3420 and above)
- The Trident is for secure base fixing
- Attractive warm light grey spatter finish to suit any environment. The handle, trimplate and key hole cover are a warm dark grey



**The Chubb Trident**

## Features

- High quality cash safe protecting cash within an office environment with a high level of security of Grade 3 & 5
- The Europa range is tested to ECB.S and conforming to EN1143-1
- Passive and active relockers are incorporated into the boltwork to resist attack
- Chubb safes special barrier material is applied in the construction of the safe to protect against various kinds of burglary attack
- Each safe can be equipped with high quality fittings to maximise storage requirements
- The Europa can be customised with a choice of locking options, deposits, shelves and lockable drawer deposits in order to meet customer requirements
- Base fixing is standard on all models



**Europa**



# Anti-theft Devices

Non-intrusive anti-theft devices to prevent loss in your retail outlets

InvisiGate Series



Crystal Gate Series



## Features

- Invisible Aetanna concealed under floor slab
- Maintain good store outlook
- Cause no disruption to store traffic

- Slim line crystal design
- Compatible with all 58kHz labels and hard tags
- Self-contained electronic board for easy installation
- Multiple pedestal and installation options
- Software-controlled with USB cable connection to PC or laptop

“ Building a total security solution with the right devices is very important, yet challenging. The factors to consider include site environment, desired security level, user's expectations and budget. The ultimate goal is to ensure the setup is able to defend, deter, deny and detect potential crimes, and ensure the premises is well protected from any break-ins.

Examples of security devices for different applications in different settings are listed here for reference. Consult our security advisor for recommendations when designing your total security solution.

”

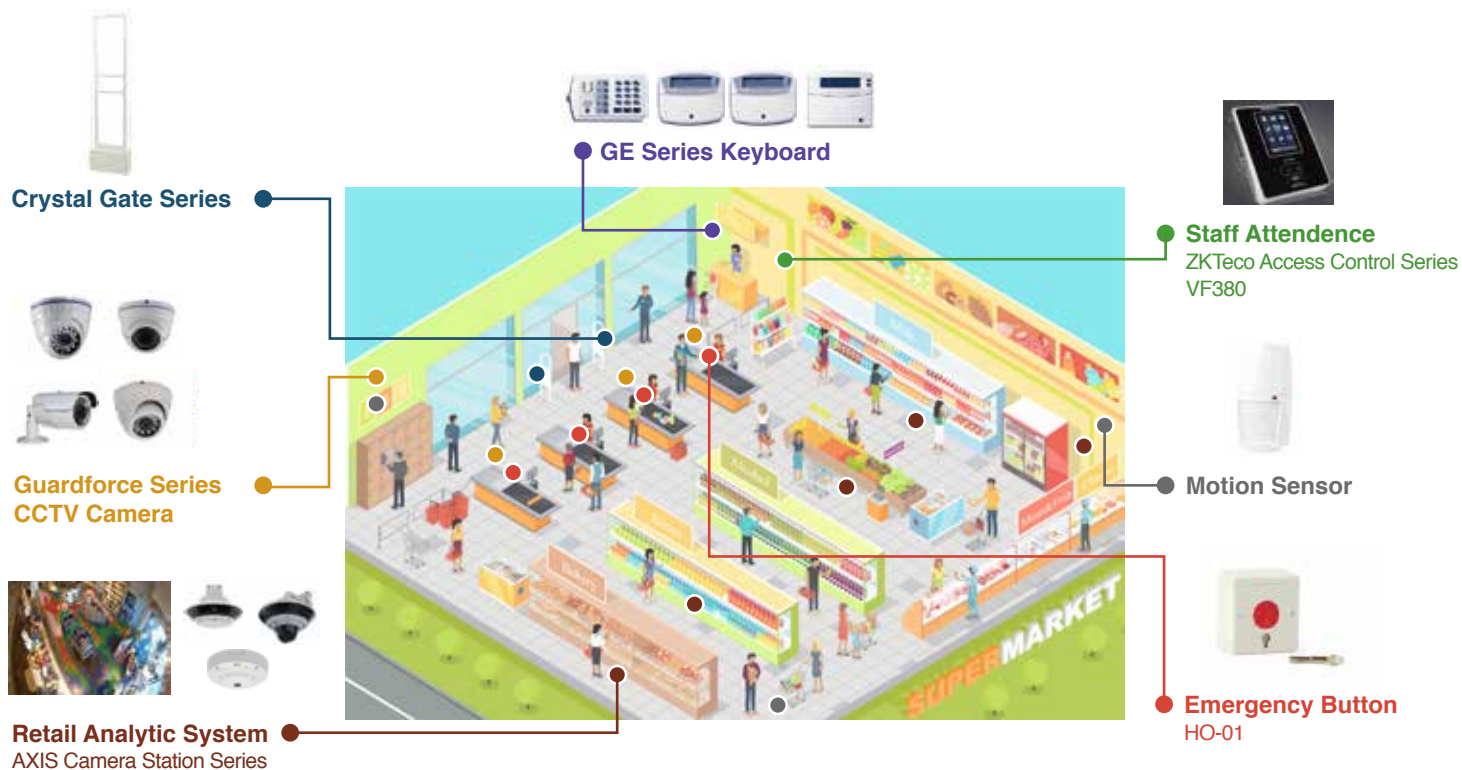
# Application



# Application

Application

## Retail Solution

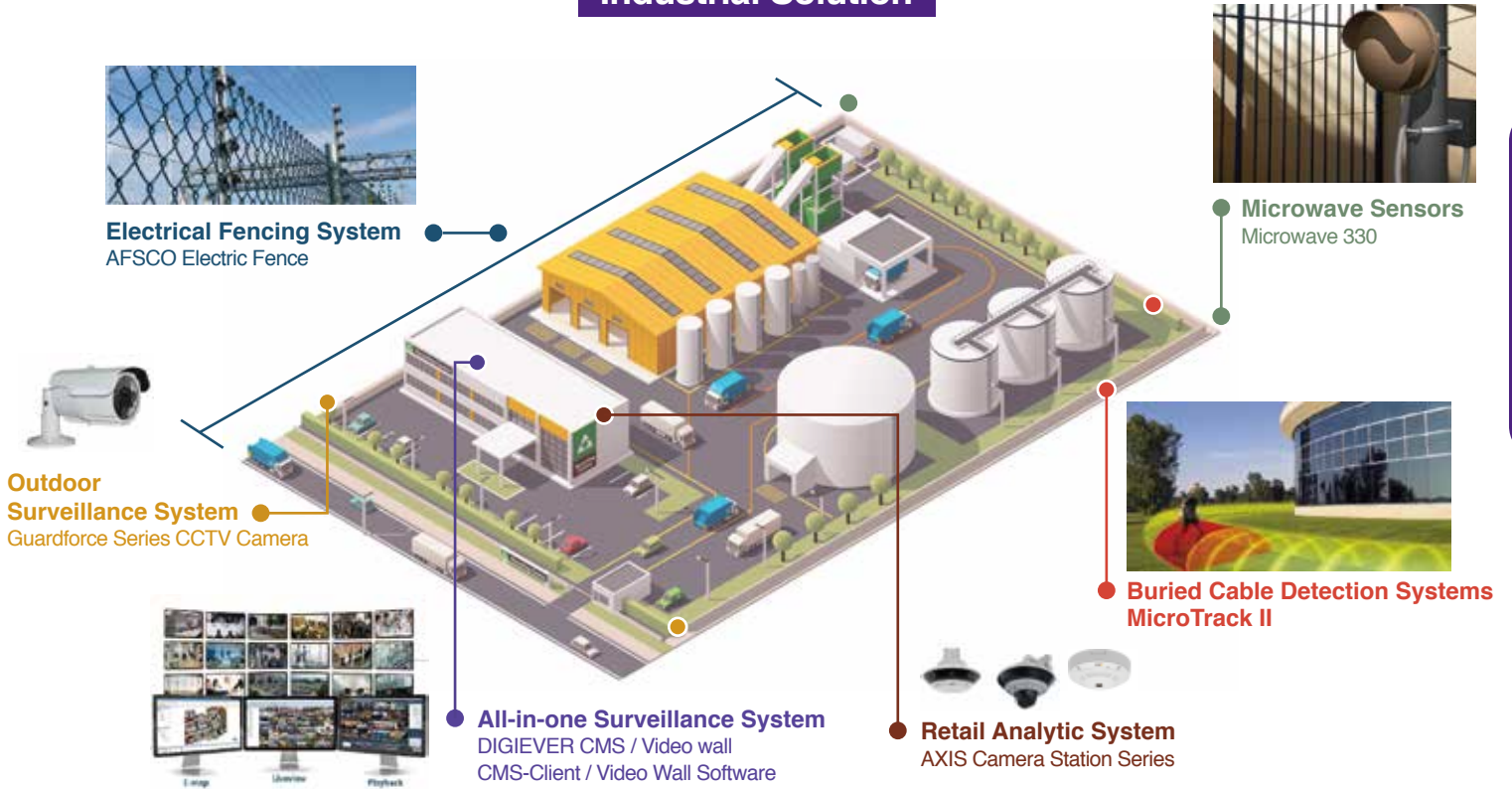


## Health Care Solution



# Application

## Industrial Solution



Application

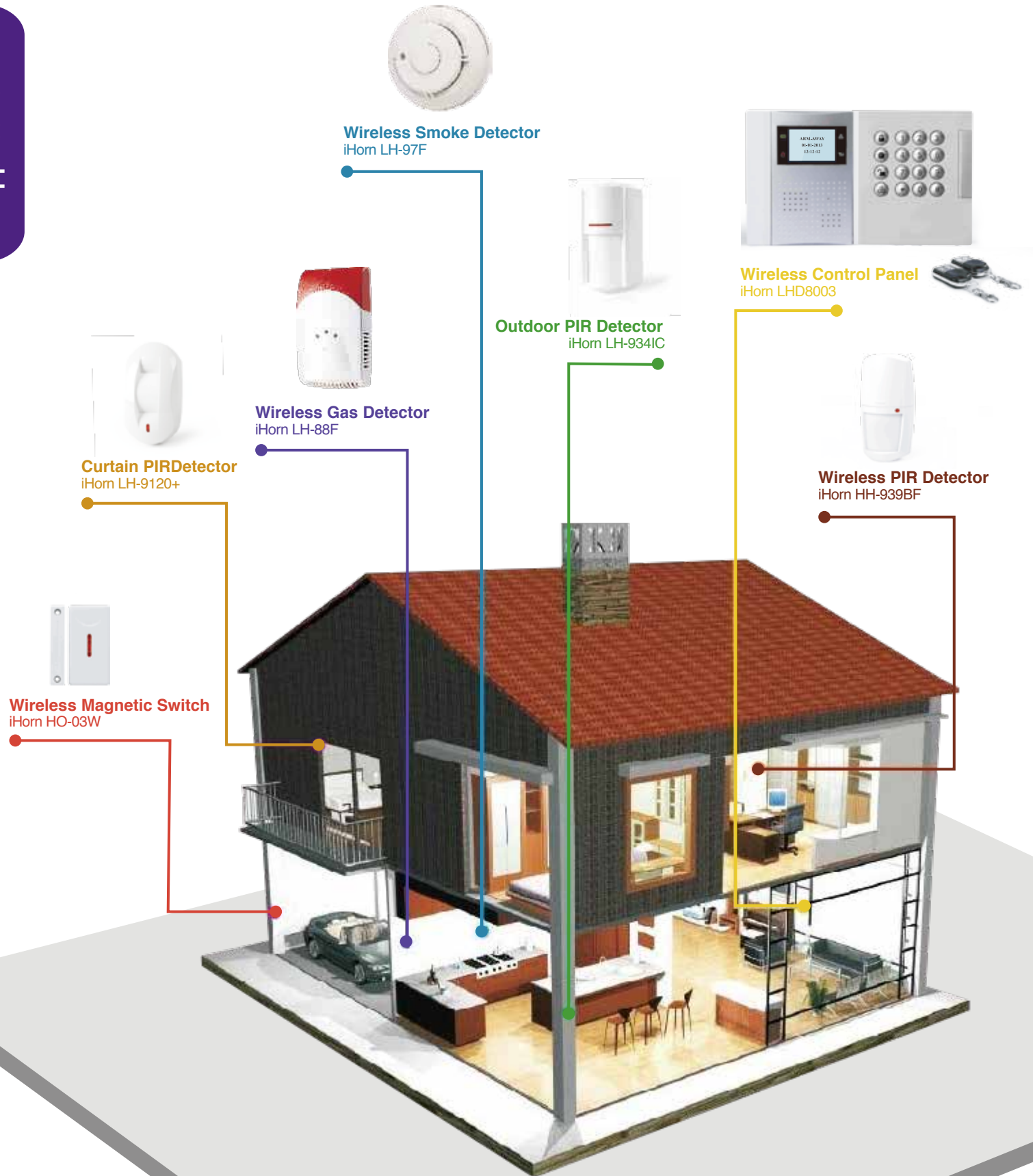
## Office Solution



# Application

Application

## Residential Solution



# ***Guardforce***

## **Guardforce Limited**

1/F, Guardforce Centre, 3 Hok Yuen Street East, Hung Hom,  
Kowloon, Hong Kong

**Tel** +852 2765 7654

**Fax** +852 2333 8650

**Email** [info@guardforce.com.hk](mailto:info@guardforce.com.hk)

**Web** [www.guardforce.com.hk](http://www.guardforce.com.hk)

---

## **Guardforce (Macau) Limited**

Av. Venceslau de Morais, Edf. Ind. Keck Seng, Fase III, 2N,  
Macau

**Tel** +853 2848 1236

**Fax** +853 2841 0202

**Email** [info@guardforce.com.mo](mailto:info@guardforce.com.mo)

**Web** [www.guardforce.com.mo](http://www.guardforce.com.mo)

---

## **Guardforce Service Solutions Co., Ltd.**

1780 Teo Hong Bangna Building, Bangna-Trad Road, Bangna,  
Bangkok, Thailand 10260

**Tel** +66 (0) 2746 7000

**Fax** +66 (0) 2746 7001

**Email** [info@guardforce.co.th](mailto:info@guardforce.co.th)

**Web** [www.guardforce.co.th](http://www.guardforce.co.th)